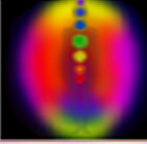
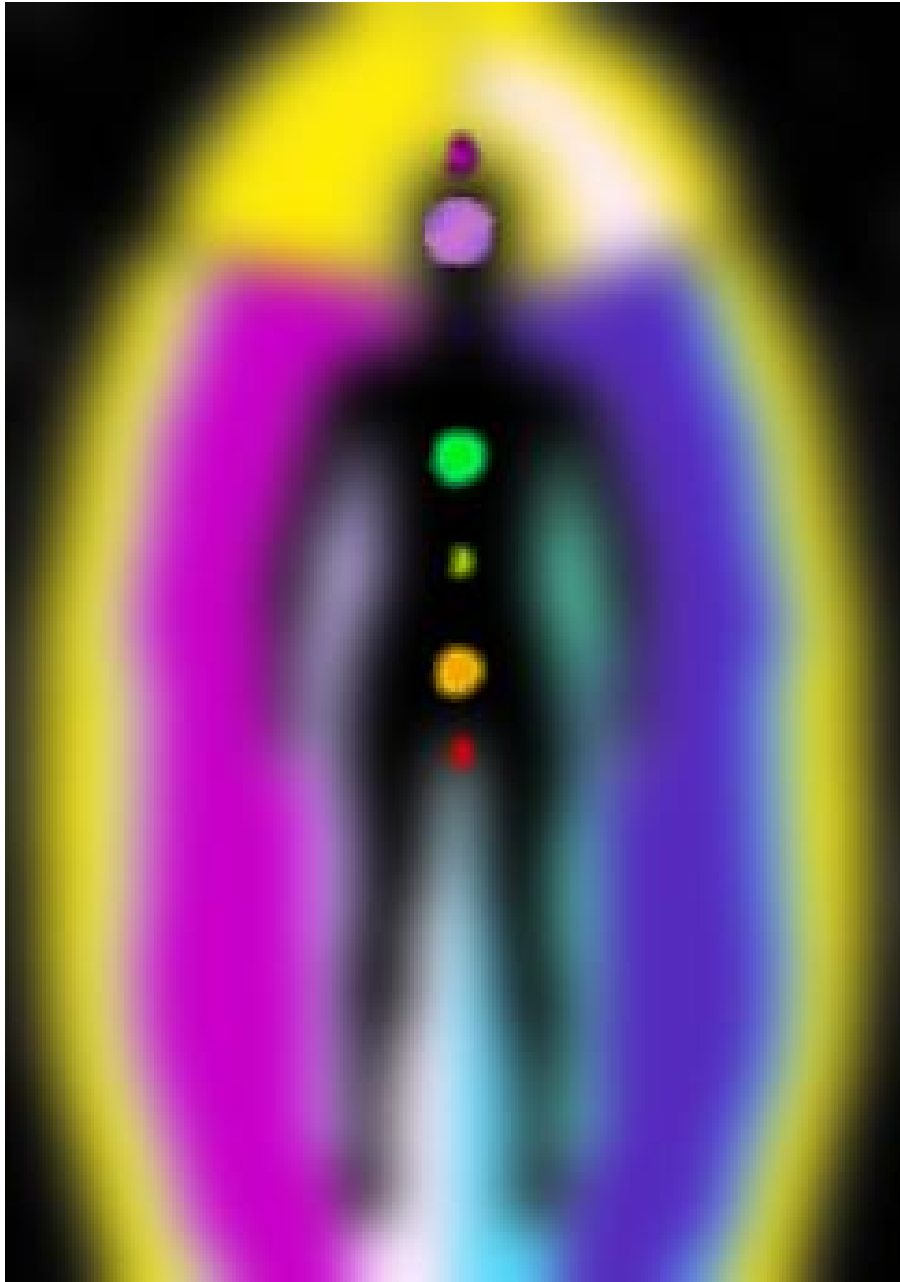


AURA IMAGING SYSTEMS



AURA REPORT







YOUR AURA REPORT

WinAuraStar measures your personal biofeedback data with handplates of an AuraCamera Coggins 6000 or with the WinAuraStar AuraSensor-Box. The data is analyzed and processed so that information about your personal aura can be displayed in graphic and text. The aura shows certain colors in different areas. All colors and areas have a certain meaning and reflect emotional and mental characteristics about your person. You can see personal potentials, character types, but also problems and disturbances.

Please note: This software and printout is only intended for your personal insight and for entertainment purposes. It is NOT a medical software or intended for therapeutic diagnosis and treatment. Please consult your doctor or therapist for medical diagnosis and treatment.

YOUR MAIN and AVERAGE AURA COLOR

If you look at auras you often discover that there is one main or average color in the aura. This color reflects the main characteristics of your personality. Its meaning can be described with several keywords. You will often find that this reflects your personality in its core.

Your Personal Average Main Color DEEP BLUE indicates here:



Blue is the "Communication" color which indicates that you are a sensitive and intuitive listener, able to transform and heal others through your love and listening. You may be coming upon a good time for learning since you are in a particularly receptive frame of mind. Trust your intuition because it will lead you to learn about things which are important for your soul's evolution and growth. Peaceful times are around the corner.



YOUR AURA Photo REPORT interpretation

The world sees you as calm and peaceful. You have a generally quiet and contemplative nature which has a pacifying effect on others. Unification and a sense of belonging are important to you. Blue represents loyalty, depth of feeling, relaxed sensitivity, empathy and an artistic nature. People see you as the calm in a troubled sea. You have extraordinary patience and are able to solve the most chaotic of situations peacefully and quickly. Your blue root chakra suggests that you may be a natural diplomat and problem-solver.

Blue is the "communication" color which indicates that you are a sensitive and intuitive listener, able to transform and heal others through your loving attention. You may be feeling it's a good time for learning since you are in a particularly receptive state. Trust your intuition because it will lead you to learn about things which are important for your soul's evolution and growth. You are filled with tranquility and peace. You may be feeling the need to spend an extra amount of time alone or in solitary pursuits.

Blue is the "Communication" color that indicates you are a sensitive and intuitive listener, able to transform and heal others through your love and through patient listening. You may be coming upon a good time for learning as you are in a particularly receptive peace of mind. Your crown chakra is telling you that you may trust your intuition to lead you to learn about things which are important for your soul's evolution and growth. Peaceful times are around the corner for you.

At this point in time you are experiencing deep inner peace and tranquility in your life. Above all, you want to create harmony in your environment. You may be on vacation or just experiencing a "time out" to relax and gather your energies. If you meditate, you may easily be able to access blissful states of consciousness. Your spirituality, rest and peace are your main focus now.

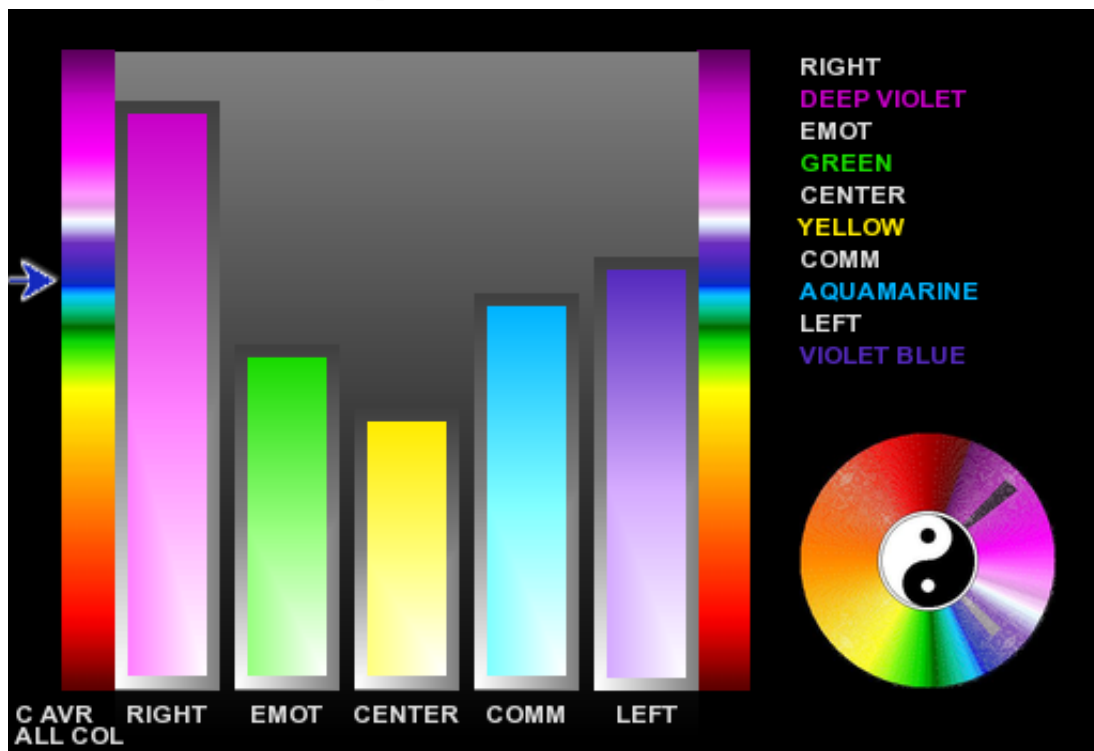
At this point in time you are experiencing deep inner peace and tranquility in your life. You desire your relationships to be equally as peaceful. The last thing you want or need is an emotionally charged romantic drama. With that in mind, a person with strong leadership skills and warm bright color like yellow will compliment your peaceful nature with their warm, happy, and optimistic attitude, which may occasionally upset your peaceful equilibrium. However, do not be surprised if your desire for total peace and tranquility draws your spirit to another person with similar rich blue tones. By involving yourself with such a partner, it is possible that you may experience a deep, sensitive, and mature relationship, which might not be quite as physical as one that you would experience with a partner whose colors compliment yours. Either way, your cool intellect and attention to detail will allow you to overcome most any problems that might develop over time.

Blue is a primary, receding color. Blue therefore is very emotional, tender, and nurturing. Your closest resonant planet is the Moon, whose vibration is highly sensitive and spiritual.



YOUR AURA Photo REPORT interpretation

All colors and the areas in which they appear have certain meanings and reflect emotional and mental characteristics about your person:



This bar graph shows the main colors of your aura field. Each bar represents one specific color in a certain aura field. You can see the color at the top of each bar graph. Its height is only determined by the color itself and not by any energy level. If the bar graph reaches until the top it is a violet or magenta graph. If it is at the bottom it will be red or orange. The vertical palette beside also helps you to determine the exact color. The colored pointer at the left side determines the main average color of your aura. The color wheel points to the colors of the right side (long pointer) and left side (short pointer) of the aura field.

RIGHT SIDE COLOR (EXPRESSION): DEEP VIOLET

COLOR of EMPATHY: GREEN

CENTER COLOR (EXPERIENCE): YELLOW

COLOR of COMMUNICATION: AQUAMARINE

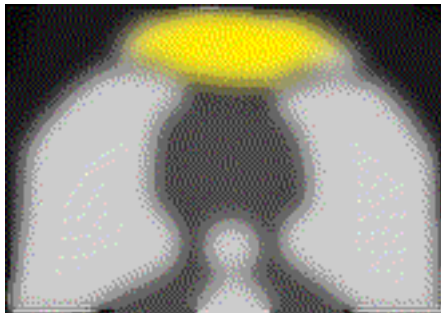
LEFT SIDE COLOR (IMPRESSION): VIOLET BLUE



YOUR AURA Photo REPORT interpretation

All colors and the areas in which they appear have certain meanings and reflect emotional and mental characteristics about your person:

CENTER COLOR (EXPERIENCE): **YELLOW**



The color seen over your head is what you are experiencing for yourself now. It's the color that would best describe you now. If the color is high it could mean current aspirations or what you now feel you wish to be.

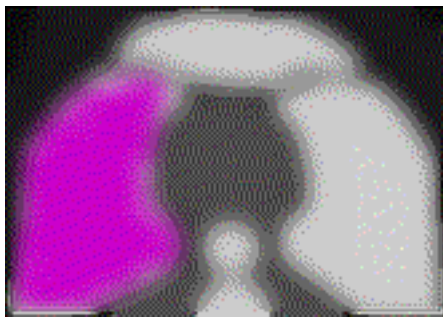
Your Personal Color indicates here:

Joy and happiness surround you now. Your excitement is contagious. Life is your playground. You make everything fun. Even the most tedious of household tasks become a game for you because you infuse everything with a sense of playfulness. At heart you are a happy, laughing child. You also have a bright and curious intellect hungry for new and exciting ideas.



YOUR AURA Photo REPORT interpretation

RIGHT SIDE COLOR (EXPRESSION): **DEEP VIOLET**

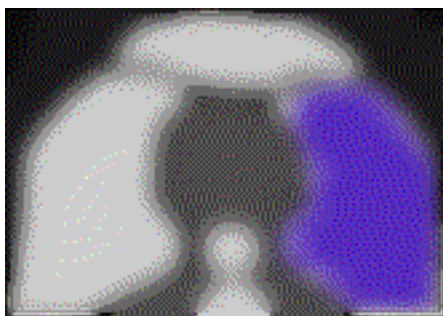


The color on the right side is traditionally the energy being expressed. It is the vibrational frequency most likely seen or felt by others around you. Many times your friends will think this is the energy that you are made of, however, it is what you are putting out to the world.

Your Personal Color indicates here:

This color may mean one of several things: You may have been feeling imbalanced, stressed or most likely, have been experiencing a profoundly magical period in your life. People see you as mystical and magical. You put the highest vibrational frequency out into the world. What you want comes to you as if by magic. You seem to effortlessly receive all that you need. Your third eye is open and active, enabling your clairvoyant abilities to blossom. You desire a mystical union with the divine--a high degree of sensitivity leading to complete fusion between you and what you put your attention on.

LEFT SIDE COLOR (IMPRESSION): **VIOLET BLUE**



The color on the left side is normally the vibration coming into your being. The closer it is to you the sooner it will be felt. Perhaps within a few moments, hours or as long as a few months.

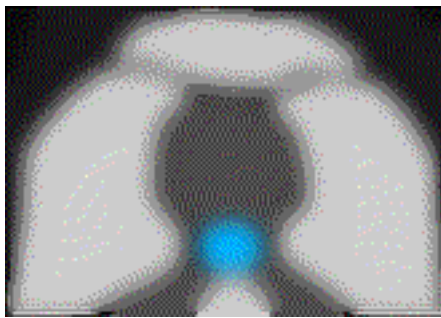
Your Personal Color indicates here:

Blue is the "communication" color which indicates that you are a sensitive and intuitive listener, able to transform and heal others through your loving attention. You may be coming upon a good time for learning since you are in a particularly receptive state. Trust your intuition because it will lead you to learn about things which are important for your soul's evolution and growth. Peaceful times are in your future.



YOUR AURA Photo REPORT interpretation

COLOR of COMMUNICATION: **AQUAMARINE**

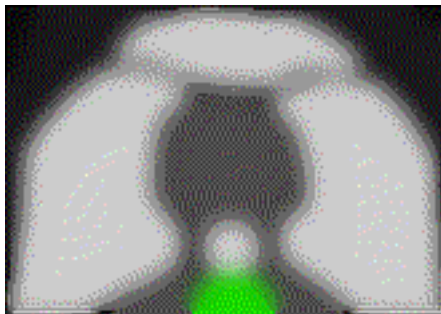


THROAT (Creative Expression): The throat chakra shows how you communicate with your environment and how you express your creativity. Communication and expression are not only verbal expression but also the physical, emotional and creative expressions of your ego. It also signifies your sensual ability to perceive.

Your Personal Color indicates here:

You wish to achieve inner peace and create harmony in the world. Not only must you feel peaceful, you also feel the need to teach and foster peace in others. You may wish to change the world by helping others to achieve well being, or perhaps through creating beauty in the environment through the arts. You are practical and diligent as well as spiritual and sensitive.

COLOR of EMPATHY: **GREEN**



HEART (Empathy): The color of the HEART chakra represents your energy in relation to connection, affinity, compassion and empathy. How you feel about yourself and others is reflected here. If you feel intense for someone or something the energy will be very strong here.

Your Personal Color indicates here:

You are a balanced, compassionate, caring individual who desires the best for everyone. You work hard to achieve position and authority in life because you have a proud heart and desire to be looked up to. Although you take your responsibilities very seriously, you still want to enjoy yourself and have fun in your life. Your optimism is contagious. The yellow and green in your heart chakra reveals that you are a charming, humorous individual with a powerful and commanding presence.



YIN-YANG COLOR WHEEL POLARITY

The Yin-Yang Color Wheel Polarity Chart gives you a comparison of the colors of your right side (long indicator) and the left side (short indicator). The indicators point to the colors of the sides.

Long male Yang-Indicator: The right side usually represents the male, active, extroverted part of your personality. These are characteristics which your environment senses most likely from you by your expression. This energy represents your personal power for action and putting yourself in scene and how you get along in life when expressing your needs and wishes.

Short female Yin-Indicator: The vibration of the left side of the body (on the picture this it is the right side of the image) represents the female, emotional part of your personality. The left side indicates what you perceive from outside and what kind of impact these impressions have on you inside. Also encounters with people and situations in which you are involved can be seen here.

If both indicators stand near by, impression and expression is quite balanced. What you express and and what you perceive is of the same energy. Male and female energies seem to be balanced.

If both indicators are separated: You express different energy than what you perceive from the outside. You need to look at the colors of both sides to see if these colors support each other or if they distract you and are stressful for your energy system. In case you do not feel well with the situation or energy you might want to balance your energy system with a complimentary color.

If the indicators point to the right side (left side on the Color Wheel Chart), where the red, orange and yellow colors are: Your expression also includes self-realization. You know how to act in order to achieve your interests and goals in life. But there might be the danger that there is too much egotism.



If the indicators point to the left side (right side on the Color Wheel Chart), where the magenta, violet, white and blue colors are: You are a quite sensitive and sensible person. It seems that you care for others: You are an altruistic person. On the other hand you need to learn to stand up, act for yourself and not let others do to you what they like. Sometimes it might be useful to also have an argument or fight for oneself.

If the indicators point to the top (red colors): You are an active and fiery person. It has to do with the spontaneous, real expression of power and life. Also there is a strong connection to physical matters which is a benefit for the material needs of life. Beside the theme to stand with both feet firmly on the ground, there is also the theme of passion and sexuality. The own energy can be used to realize your will. People with a red aura have a fast reaction.

Negative characteristics: You could tend to lead a life on the fast lane. Too much activity can lead to a situation where you do not reflect your impressions anymore and only see the material side of life. On the psychological level it can lead to egotism, greed, impatience and inner restlessness. Everything is done out of an impulse and only afterwards you start to think about it.

If the indicators point to the bottom (green and blue colors): You are somebody seeking for truth and you are trying to get to the very ground of matters. You are not satisfied with superficial explanations but you want to explore things in their depth. You cannot be misled very easily since your strong mind can clearly perceive deceptions. You have great idealism and the tendency to decrypt the secrets of life. You can formulate ideas and put them into words which can be understood by many people.

If the mind is getting too strong it can happen that you get raped by your own images of mind on an inner and outer plane. Life gets sterile by this inner standpoint because feelings are missing.



HOW TO READ THE AURA YOURSELF OR YOUR COLOR INTERPRETATION KEY

Aura Reading is not difficult. An aura is an extension of the human body. It is the corona discharge we emanate as a field of light and colors. This corona is as excitable, reactionary and alive as we are. If we change drastically, it changes drastically. If we are rooted and balanced, the aura reflects this balance in its shape and colors.

AREAS OF THE HUMAN AURA FIELD

Right side, picture's left:

This is the person's masculine energy. It is their expressive and active side, how one projects oneself to the world. It is more straightforward and physical, less emotional. Colors on this side may have to do with physical changes, memories or goals. It is the energy that is moving out. The recent or far past.

Left side, picture's right:

This is the person's feminine side. This is their passive and receptive side. This side is the emotional and imaginative side. This side is indicative of what a person is projecting into the future. It is the energy that is moving in. The person may not be aware of it yet though.

Center, above the head:

This is the energy of the moment, usually in the colors that the person traditionally reflects. The closer the colors are, the more intensely they are thinking about or experiencing them. If there is a band of color stretching like an arc over the top of the photo, this is indicative of a grand fear or goal.

Auras that expand out:

This indicates spiritual expansion, expressiveness, extroversion, social activity, desire for connection, gregariousness, positive outlook, sense of adventure.

Auras closer in:

This indicate inward focus, sensitivity, desire for solitude, meditation, peace, tranquility, or rest. This could mean a need to express or move out.



Aura Photo Report

MEANING OF THE AURA COLORS



Violet: You are the fairy or leprachaun person of the color spectrum. "magical" would best describe your life and your way of operating the world at this point. You would rather talk about miracles, magic, and pots of gold at the end of the rainbow rather than anything ordinary or mundane. You would rather focus on the ethereal and the sublime. The beautiful world of the imagination is where you are safest and happiest. You create a magical environment to live in. Your psychic abilities are also strong and fine-tuned now.

White: "Peace, Loving, and Balancing" best describe your focus in life now. You are natural, clear conduit for spiritual balancing energy for others as well as yourself. This energy indicates you are in a regenerative, restful phase. If you do not work in the energy-balancing arts, you may find yourself gently encouraging and nurturing others with just your mere presence. Presently, your highest goals are to achieve complete inner peace and to develop your relationship with the Creator.

Blue: At this point in time, you are experiencing deep inner peace and tranquility in your life. Above all, you want to create harmony and ease in your environment. You may be on vacation or just experiencing a "time out" to relax and gather your energies. If you meditate, you may be able to easily access blissful states of consciousness. Your spirituality, rest, and peace are your main focus now.

Green: "Hard at work" would best describe you now. You have serious goals, and you live your life in an organized, deliberate, and economical fashion. You are ambitious and desire prestige, notoriety, and power. You are also full of compassion and can be just as generous as you are demanding. You may be an excellent teacher, counselor, or business owner. You are full of gentle strength.

Yellow: Joy and happiness surround you now. Your excitement is contagious, life is your playground, and you make everything fun. Even the most tedious of household tasks becomes a game when you do them because you infuse everything with a sense of fun. At heart you are a happy, laughing child. You also have a bright and curious intellect hungry for new and exciting ideas.

Orange: You can't help expressing yourself creatively! You are an artist at heart and march to the beat of a different drummer. Right now, you are feeling powerful. You have energy, enthusiasm, confidence, and will to accomplish anything you desire. This is a time to "go for it." If you have any original ideas or creative projects in mind, you need to begin them now! Orange is also the color of originality and independence.

Red: At this time, you are experiencing a time of challenge with an action-packed schedule, barely leaving you time to breathe, let alone sleep. You have a lot to do, and you have the energy and power to move mountains at this point in your life. You may find yourself acting as a dynamic leader or find yourself in the limelight or the center of attention. You are definitely being noticed. You have so much energy you sometimes don't know what to do with it. You may exhaust the people around you with your incredible enthusiasm.



LOVE AND RELATIONSHIP AURA COLORS

Wouldn't it be exciting to tell at a first glance when meeting an attractive stranger what kind of lover, husband, or friend he may be? Is this handsome hunk a caring, honest, compassionate, potential family man? Could he be monogamous? Or is this cutie giving you the eye of a philandering rock'n roller, bedding down a different woman every night? Appearances, when meeting someone for the first time, are usually deceiving. Unless we are familiar with a person's background, it usually takes quite a while to honestly know someone. On the other hand, one's aura tells all. The aura, a field of energy that surrounds people and other living things does not lie or conceal. The beautiful colors in one's auric field reveal a person's true nature.

Generally there are six basic colors seen in the aura correspond to six basic personality types, with each having a distinctive social and sexual style. Now, if you know what color his aura is, you'll know what to expect from him! Do you want to be with a lusty, animalistic red? Or would you rather be with a supportive and sensitive blue? Here are the six basic colors along with their general descriptions. Please note that these descriptions do not always apply, but are generalities, or like tendencies. Life is always full of surprises, and anyone is capable of just about anything.

RED:

Reds love sex. For them it's a hearty, wanton, playful, and joyful physical release. Reds don't necessarily need to be in love to enjoy sex, since the sheer physical pleasure is the most important thing. They are passionate lovers and are not afraid to fully experience their sexuality, and turn their fantasies into reality! Red signifies high energy, physical and emotional drive. If you want to have an exciting fling with a partner who takes control, choose red.

ORANGE:

Oranges need space. If you're consumed in your career or need a lot of time to yourself, choose an orange. An orange is fun when he's around, and also loves adventurous, high energy sex like a red, but an orange will not be too demanding. Oranges are usually extremely independent, often athletic, and frequently need to take off on some high adventure to test the limits of their physical and mental strength. And orange might ask you to go sky diving or bungee jumping. Don't expect monogamy from this one either. Oranges relish the thrill of seduction.



YELLOW:

Yellows love to sit around and discuss, theorize and analyze. You'll often find them sitting in bohemian cafes, huddled around steaming espresso debating how to solve the problems of the world. To them, life is one great mental riddle, or crossword puzzle which can be ultimately solved in a logical and systematic manner. Innately curious, a yellow is always asking questions. Like Mr. Spock on Star Trek, their approach to life is primarily mental and cerebral. A yellow would probably rather discuss your political views on a first date than ravish your body. If you are turned on by intelligence, quick wit, and an optimistic attitude about life, go with Mr. Yellow.

GREEN:

Marry a green. Greens come from the heart and their generosity and compassion know no limits. They are innately caring and tend to want to heal the world. Greens are often doctors, teachers, therapists, and social workers. They want to serve, and make the world a better place to live in. Greens make tender, loyal, caring lovers, as much concerned with your pleasure as with theirs. They tend to love children and animals, enjoy domesticity and family life. Greens are also ambitious and strive to reach the top of their field. Not only kind, this man is usually well-off financially, too.

BLUE:

Blues are sensitive. They have great depth of feeling and crave intimacy and meaningful communication. They are often thoughtful and introspective. Not usually materialistic, a rich spiritual, contemplative and creative life is more important to them than monetary wealth. Above all, blues wish to be in loving, supportive relationships to which they can generously give and reveal themselves. With blues, love and sex go hand in hand. If you want to be with somebody who is true and emotionally there for you, choose a blue.

PURPLE:

Expect the unexpected with a purple! These fascinating nonconformists live in the wonderful, wild worlds of their unlimited imaginations. Often purples would rather daydream and fantasize about sex, and play with erotic images in their heads rather than actually do it. Fantasy, role playing and fetishism are not out of the question for a purple. Purples, who tend toward passivity, usually enjoy physical intimacy only after they feel safe and trusting with a caring partner. If you want to take the lead in a relationship and explore the kinky side, then purple may be for you.



YOUR AURA Chakra REPORT interpretation



WinAuraStar gives you a detailed report on chakra sizes, chakra color and chakra shapes. On the next pages you will see a detailed explanation for every chakra. First you will get general information about chakras, their location and their assignment to colors, music, senses and gemstones. The functions of the chakras are explained in detail. Then there is a display of your personal chakra - its shape and color as well as its size in percentage.

SHAPES

The ideal chakra shape is round like a circle. This indicates a balanced chakra. If it is not symmetrical this might indicate an imbalanced chakra.

COLOR

The resonant color for each chakra is displayed. This color may vary according to your personal energy level. It can be lighter or darker. Light colors indicate that you project your energy outwards while dark colors tell you that you draw the energy inwards. Lightness and darkness can also be indicators for positive harmony or negative stress.

SIZE

The chakra size indicates your activity in the fields connected to the chakras. A large chakra (75-100%) indicates a high level of energy in the specific chakra and supports all matters connected to that chakra. Medium sized chakras show a normal activity (40-75%). Small chakras show little energy in the chakra and the connected areas in your life (less than 40%).

Please refer to the general chakra descriptions for more information about chakras and how they are connected to personal fields in your life.



ROOT CHAKRA

(also known as base or firstchakra)

Traditional Color: Red

Musical Note: C

Location: The base of the spine

Sense: Smell

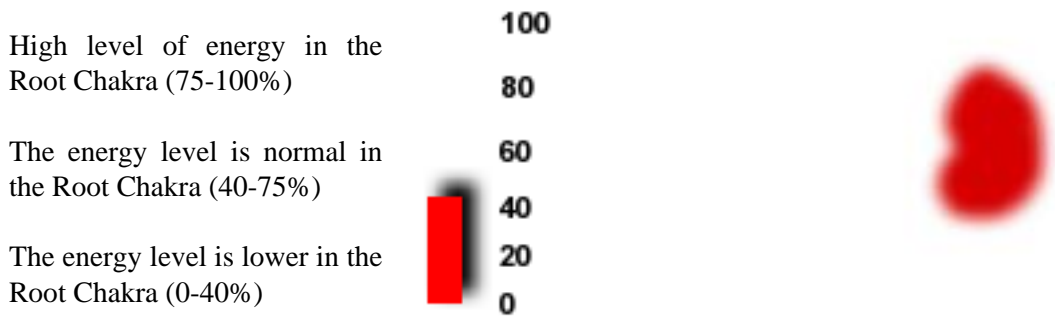
Function: Survival, will, self preservation, vitality, passion

Gemstones: Ruby, garnet, bloodstone

The first chakra is located at the base of the spine, right at the tailbone. In many cultures, the root chakra (or first chakra) is seen as red. Red is fiery, vital, full of energy and life force. It is a primal body color, and the first chakra is a primal center. The first chakra contains the will to survive, to be. It is the anchor point, or connection with the Earth.

In Mutant Message Down Under, Marlo Morgan(1991) talks about rediscovering her first chakra information when she accompanied an aboriginal tribe on a walkabout through the Outback in Australia. In an effort to teach her how to use her first chakra, the tribe made her "leader for a day, " and she had to find food and water for the group. For a time, she despaired that they would all die of thirst because she couldn't connect with her natural first chakra ability to find water. When she finally began to open up her first chakra and use this energy and information, she led the tribe right to an underground spring!

Our bodies need to have first chakra stimulation every so often. This is why we go to scary movies, or action thrillers, why we climb mountains and take adrenalin-rushing risks! It keeps the flow of first chakra energy alive and moving. Without it, life becomes dull. When the first chakra is congested, it can lead to feelings of weakness and powerlessness in life -a sense of being ungrounded. Sometimes the first chakra gets overstimulated and the natural fears and concerns related to survival become overwhelming. When unbalanced, one may become obsessed with material security, accumulating things, saving like a tightwad-or someone who is overly concerned with physical safety. The "us" versus "them" attitude can develop with an overstimulated first chakra.





SACRAL CHAKRA

(naval or second chakra)

Traditional Color: Orange

Musical Note: D

Location: Two inches below the belly button

Sense: Taste

Function: Creativity, emotions, clairsentience (clear feeling) procreation, sexuality, sensuality, enthusiasm

Gemstones: Coral, carnelian, gold calcite, amber

The sacral chakra is located about two inches below the belly button. Viewed from the back, it is right at the top of the sacrum. The sacral chakra's traditional color is orange, the color of creative energy. It's no accident that creative energy and the second chakra go together-this chakra is connected to the male or female reproductive glands. Creativity is brought to life through our emotions, which also begin in the sacral chakra. In the most basic sense, emotions lead to life: without desire and love, we would not be motivated to create children!

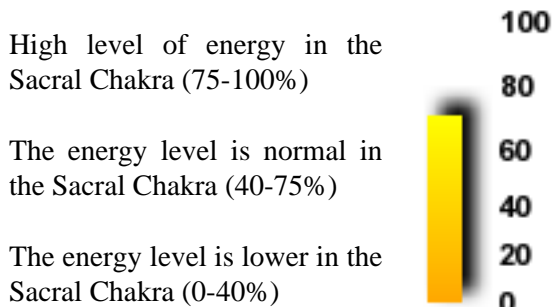
That fiery feeling in your belly, felt when you desire someone (or when the hero and heroine express their love for each other in the movies) is your sacral chakra opening up. The second chakra creates a strong desire within us for unity with others.

This chakra is also the seat of a psychic ability called clairsentience: the ability to feel the emotions of someone else. You can pick up other people's emotions with our clairsentience. Here is an example of how it works:

I was teaching a class one evening when a young woman came in quite distressed. "I've been crying all day, and I don't know why," Mary sighed. "What is wrong with me?" I could see that her second chakra, the seat of emotions, was wide open and filled with the emotions of other people. The intense grief Mary was feeling was not even her own emotion-she had picked it up from someone else who was desperately unhappy.

It's no coincidence that "go with your gut" is a popular expression in business!

When the second chakra is congested or closed down, it can lead to feelings of isolation, a desire to be alone, and sexual inactivity. It can also cause dependency. When it is overstimulated, it causes bouts of intense emotion, an overwhelming need to get attention from others or a tendency to overindulge in food, sexual experiences, and material possessions.





SOLAR PLEXUS CHAKRA

(or third chakra)

Traditional Color: Yellow

Musical Note: E

Location: Just under the ribcage, at the diaphragm or solar plexus

Sense: Sight **Function:** Regulates body's life force energy, mental activity, and self-empowerment

Gemstones: Citrine, gold, topaz, amber, tiger eye

The solar plexus chakra is found in the center of your body, just under where the ribs meet at the diaphragm, often seen as clear yellow. Yellow is a stimulating color, sometimes associated with creative mental activity. There is also an element of spontaneity, excitement, and joy. This chakra regulates life force energy in the body: it determines how productive you are. It is the chakra that can literally give energy and life to your dreams by focusing and distributing your lower chakra energies as they are needed. It is located at your solar plexus, just under where the ribs meet.

The solar plexus chakra gives you a natural drive to compete and excel. It is the chakra of self. When this chakra is clear, open, and spinning well, you feel alert, confident, and energetic. You have an "edge". When it is congested, you can feel emotionally suppressed, confused, and unsure how to take action and achieve your goals. When the third chakra is overstimulated, it can lead to overly competitive and self-centered behavior.

Many businesses are set at a solar plexus chakra vibration. In other words, everyone in the company is supposed to match at "let's get it done, beat the competition" color(muddy yellow). At first, there is a sense of teamwork-uniting together to create success. But if managers get carried away in that competitive, company-centered (which sometimes becomes self-centered) energy, the demands they place on their employees become overwhelming. Individuals cease to matter in this over-active third chakra environment. The work is everything.

Job burnout can happen when this intense competitive vibration lasts for a long time. Ulcers and other digestive disorders are also symptoms of an overstimulated third chakra.

High level of energy in the Solarplexus Chakra (75-100%)

100

The energy level is normal in the Solarplexus Chakra (40-75%)

80

60

40

The energy level is lower in the Solarplexus Chakra (0-40%)

20

0





Aura Chakra Report



HEART CHAKRA:

(or fourth chakra)

Traditional Color: Green

Musical Note: F

Location: Center of the chest, just under the sternum

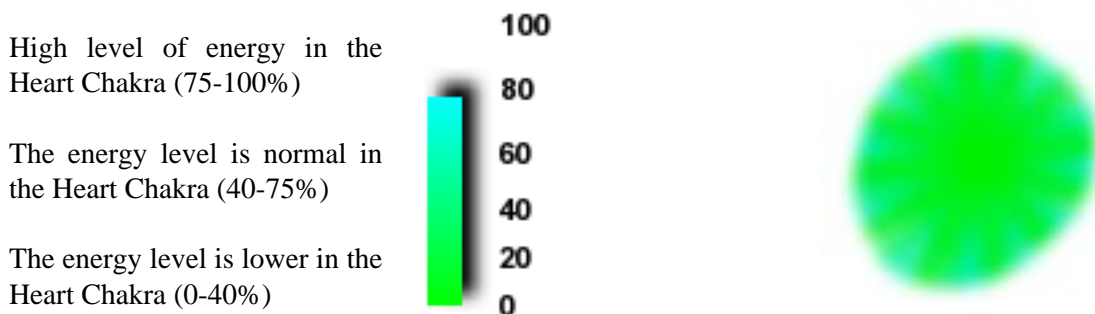
Sense: Touch function: Sense of connection with all things, oneness, caring, affinity, love, self-esteem, growth

Gemstones: Emerald, jade, tourmaline, rose quartz

Green is the traditional color associated with the heart chakra—a color of teaching and empathy, and of the Earth. It is the chakra of self esteem and self love, as well as a place of connection with those whom we love. The heart chakra transforms physical desire into love.

The heart chakra is where we store all of those old memories of being unworthy, or making mistakes. Author Barbara Brennan (1995) noted in a workshop that our culture is collectively working on strengthening the heart chakra.

This chakra is also the meeting place for body and spirit. It is the place where you communicate with yourself, and where self esteem lies. A congested fourth chakra can lead to self-consciousness, feelings of being out-of-balance, and a narrow focus in life—mainly on the needs of the self. Someone with a congested fourth chakra has a difficult time loving and giving to others. An overstimulated heart chakra works in the reverse: it can indicate an individual who is more concerned with the group and the welfare of others than his/herself.





THROAT CHAKRA:

(fifth chakra)

Traditional Color: Sky Blue

Musical Note: G

Location: The hollow of the throat

Sense: Hearing **Function:** Communication, talking, singing, higher creative arts, divine inspiration, telepathy

Gemstones: Turquoise, blue topaz, lapis, aquamarine

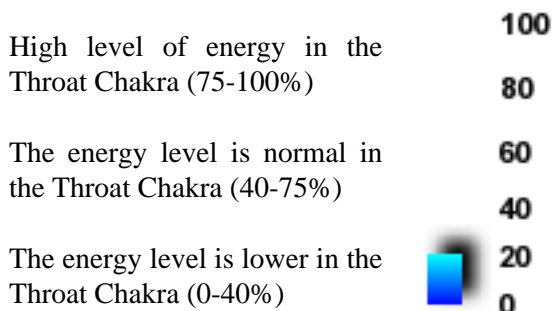
Blue, the color of communication and artistic inspiration, is the traditional color of the throat chakra. This chakra is located in the base of the throat.

The throat chakra governs one's ability to express ideas. Creative energy also moves through the throat chakra, down the arms and blossoms out through the energy centers in your hands as written words or physical creations. As a singer, I have noticed that clearing energy out of the throat chakra makes a tremendous difference in the depth, power and range of the singing voice.

The throat chakra also governs the psychic ability of telepathy. Many people in our culture today have trouble voicing their true feelings. Instead of saying what they feel, they just think about it. These unspoken thoughts go out into the telepathic airwaves (also known as the collective unconscious).

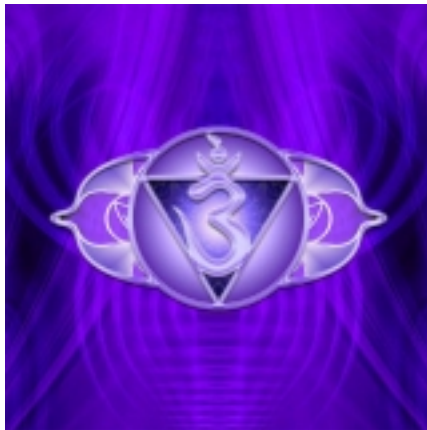
Telepathy is the art of communicating thoughts, feelings, and ideas without physically speaking or writing them. Have you ever had a mental conversation with someone in the shower? That conversation is really telepathic communication. The message goes out through your throat chakra, and often actually reaches the other person. The other party may experience what you're sending as a general idea or just a stray thought! Telepathic communication with animals is also possible through the throat chakra.

A congested throat chakra can indicate someone who doesn't like to communicate or has trouble creating with intelligence and practicality. If the throat chakra is overstimulated, it can cause the person to bring in worry and fear from the telepathic airwaves. The person begins to experience these emotions as his/her own, not realizing that he/she is just tuning in to other's mental communications.





Aura Chakra Report



THIRD EYE CHAKRA:

(Brow chakra, sixth chakra)

Traditional Color: Indigo (dark blue)

Musical Note: G

Location: Just above the eyebrows

Sense: Intuition

Function: Clairvoyance (clear seeing) intuition, spiritual sill, connecting ideas, developing a "picture" of the world

Gemstones: Lapis, azurite, sodalite, quartz, sapphire

The brow chakra, or third eye, is perhaps the most well-known of all the chakras. It is located in the center of the head, and is the seat of clairvoyance, or clear seeing. Indigo is the traditional color used by the ancients for the brow chakra-it is often considered the color of clairvoyance.

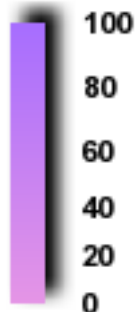
You use your third eye when you close your eyes and see a mental "movie." You also use it to create those mental image pictures I talked about earlier. The brow chakra is the center of ideas and imagination. Without the brow chakra, you would not be able to create your dreams. Why? Because you first need to see, or visualize, something before you can create it. For example, if you cannot imagine yourself starting your own business, chances are that you will never take the steps needed to begin. This is a highly idealistic chakra-it expresses your imagination and desires in their heighest forms. There is also a level of abstract intuition here that many engineers and technical people use-the ability to see a solution without going through the logical steps it would take to get there (BPI 1989).

A congested third eye leads to lack o imagination or expression of your ideas. If this center is overstimulated, it creates a high level of idealism, active imagination, and constant expression of ideas and thoughts. Too much of a good thing here can lead to dreaming "impossible dreams" like Don Quixote!

High level of energy in the 3rd Eye Chakra (75-100%)

The energy level is normal in the 3rd Eye Chakra (40-75%)

The energy level is lower in the 3rd Eye Chakra (0-40%)





Aura Chakra Report



CROWN CHAKRA:

(seventh chakra)

Additional Colors: Violet, magenta, white, gold

Musical Note: B

Location: The top of the head

Sense: Knowing

Function: Knowledge and enlightenment, connection with higher planes of consciousness, Divine Will, spiritual truth, the divine plan of the universe, certainty

Gemstones: Amethyst, diamond, quartz

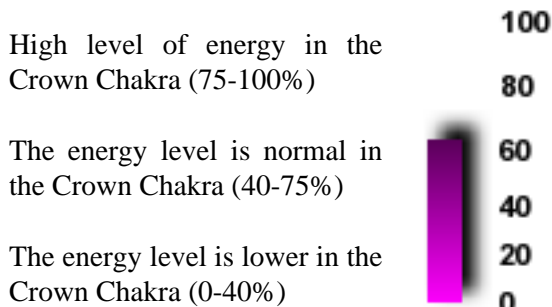
You've probably heard the saying, "That idea just came off the top of my head." This is an example of the crown chakra at work. We bring in much of our spiritual information and energy through the crown chakra. Traditionally, the main color in the crown is violet. Violet is the color of mysticism and spirituality. Other colors often associated with the crown chakra are white and gold. White is also a highly spiritual vibration, often used by trance channels-people who allow other spirits to communicate through their bodies for healing and teaching. Gold is the color of forgiveness-many energy workers and psychic ministers see that Jesus used this vibration extensively in his miraculous work (see Church reference).

The crown chakra is the seat of divine will, of certainty, of purpose. Leaders often have especially well-developed crown chakras. They use that certainty on a daily basis in making decisions and giving directions to their followers.

The crown chakra is also your own private doorway into your body. You as a spirit use it as a connecting door between your body and the spirit plane. You leave at night through the crown to go out to the astral plane (dreaming), and return in the morning. Leaving your body at night creates a space for spiritual regeneration as well as physical rest.

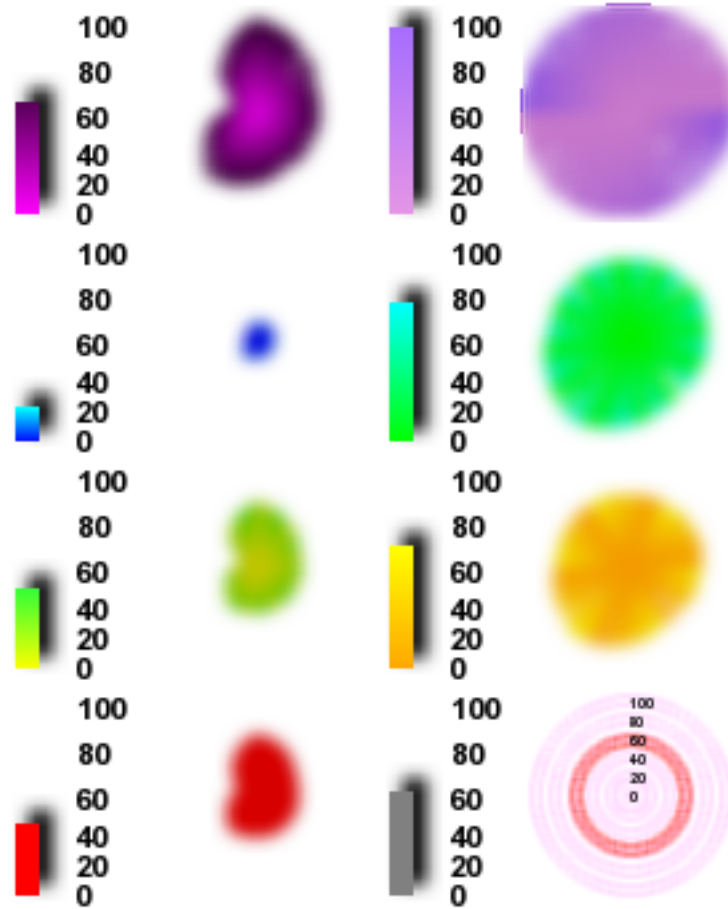
When you remember your dreams,you bring that information back with you, down through your crown. Julia Cameron recommends using morning pages to capture these creative fragments from your dreams. This is a tool to help your crown chakra pull in those astral inspirations.

A congested crown chakra may lead to confusion and uncertainty. An overstimulated crown chakra can create a need either for power and control or a disconnection with physical reality and human relations.



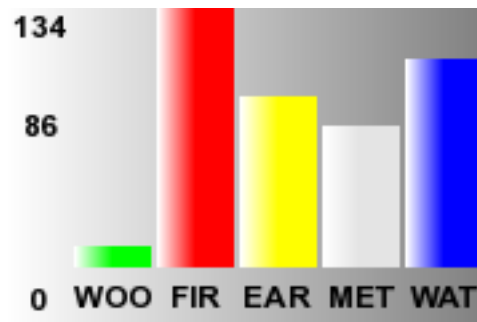
**AURA
IMAGING
SYSTEMS**

Aura Chakra Report



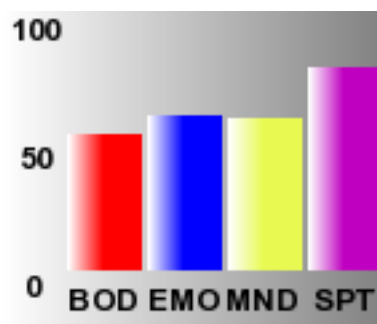


Five Elements Bar Graph



The five element bar graph shows the importance of the Chinese five elements in your energy field. These elements are wood, fire, earth, metal and water. A high bar graph shows energy abundance in this element. High energy must not be necessarily be positive but can also indicate too much of a certain influence which might lead to tension and stress. Low energy in an element shows a lack of energy in this field. It might also indicate that a certain field needs or gets relaxation which is not necessarily bad. An ideal situation is an energy balance between all five elements. If you are therapist or experienced with the five elements you might use this information for deeper insights into the personality of the person. There is a lot of information available about the five elements and their connection to body soul and spirit which can not be presented in this printout. This information can be looked up in books or online.

Four Levels

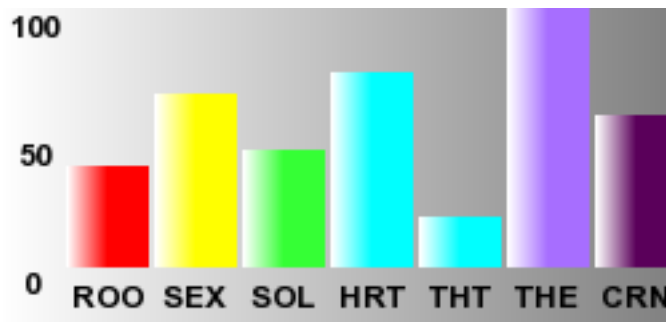


The four levels indicate which part of your life is mostly emphasized. Is it more the material and physical plane which is represented by the body? Or are emotional matters most important to you? Are you a thinker or a mind person who leads a life mainly by ratio and logic and likes to control? Or are you mainly the spiritual oriented type of person? Each of the bar graphs can have a predominance over the other and shows your main centerpoint.

This analysis is based on the chakras and their size.



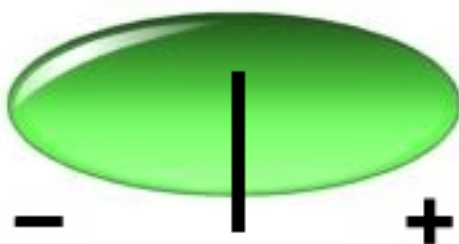
Seven Chakras Bar Graph



The bar graph about the seven chakras mainly shows the size of the chakras and their color variation. Usually those chakras will expand in size which correspond to the colors you have in your aura field. So if you have much red or orange in your aura field the first root and the second sacral chakra will expand in size. If you have much violet or blue the top chakras will expand their size. If a chakra is large or small in size this indicates that all fields in your life which are connected to that chakra are important or play only a little role. The second aspect in this bar graph is the rough tendency of color variation of the single chakras. Usually the chakras have a resonant color. The resonant color starts with red at the root chakra and follows the colors of the rainbow to violet and magenta at the crown chakra. These resonant colors mainly show the base frequency of the chakras. This base frequency is not always the same but can vary about one to three steps in the order of the rainbow colors. Red might turn to red-orange or orange. Yellow can be yellow green or even go to green or might have a tendency to the other side to gold or orange. This is showed by the rough color variety of the bar graph for each chakra to which color the chakra tends to. The exact color variety can be seen best in the display of the chakras and their vertical chakra bars from 0 to 100 % which have color gradients which go from the base frequency at the bottom to the color variation of the chakra at the top (as seen in the printout and on the screen).

Relaxation Meter

The relaxation meter is based on the temperature and shows if you are relaxed or stressed. Usually it is necessary to sit for about one or two minutes and put the hand onto the handplate. The temperature is constantly measured. The result is the indication if you are relaxed and open to your environment and its influences - in this case the relaxation meter points to the side with the plus sign. If you are stressed or in a mood of tension or not letting go and flow the pointer of the relaxation meter points to the side with the minus sign.





Body Soul Spirit



The body soul spirit bar graph or color pie shows similar to the four levels bar graph the predominance of body, soul or spirit. You will see your main centerfield here.

This mind, body, spirit graph shows in what proportions you are focusing the predominance of your energy. If the circle or pie is cut into equal sections you are a multifaceted, adaptable person, able to enjoy many various and divergent activities. You have an open mind, and are not attached to a single way of thinking or being. You are easily able to shift your awareness from one state to another without resistance.

A predominance of soul indicates that at this point in time your focus is on emotional matters, feelings, meeting, communicating and caring for other people and experiencing feelings and moods in their depths. It can also indicate creative talents and a talent for children. The heart and throat chakra might have a predominance in your aura.

A predominance of body indicates that at this time you are primarily relating to the world through your five physical senses and body sensations. You feel your emotions through your body, especially the first three chakras. You may see more of the warmer colors in your aura such as red, yellow and orange. This may also be a time when you are feeling full of energy able to enjoy and appreciate the natural world more. You may like to exercise outdoors or go camping, fishing, hiking, etc.... Your physical well being and natural environment are very important to you now.

A predominance of spirit indicates that your dreams, imagination, wishes, fantasies, artistic projects, self expression, and spiritual life are most important to you at this point in time. The practical realities of life probably hold little interest to you now. You march to the beat of your own inner drummer. You may enjoy deep meditation, prayer, or artistic pursuits. Your psychic and clairvoyant abilities may be awakening, and your synchronistic experiences may be truly miraculous. You may see more of the cooler colors in your aura such as blue, purple or white.

This analysis is based on the chakras and their size.



Please feel free to contact us for an aura photo reading.

We will be glad to answer all your questions. For the latest news on aura photography and aura video see the news or product section on our website. Thank you for your interest in aura photography and aura imaging.

*This complete page incl. header image can be edited by the program user
It is contained in the file adresslines.txt. The header image is named Promotion.jpg*

Progen Aura Imaging Systems

116 Stambaugh Street

94063 Redwood City, CA, USA

Tel: +1-(800) 321-AURA (2872)

Fax: +1-(650) 261-0193

Email: info@auraphoto.com

Web: <http://www.auraphoto.com/>